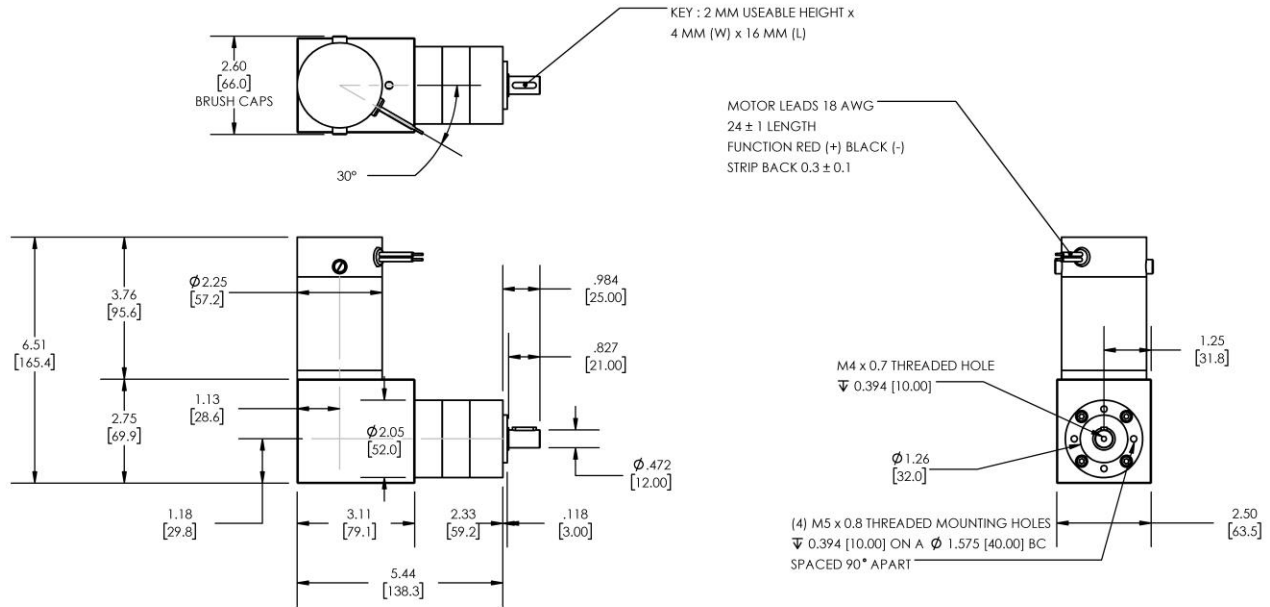


Model Number:

MMP D22-376C-24V GRA52-046



DIMENSIONS ARE INCHES [MM] UNLESS OTHERWISE STATED

| PLANETARY GEARMOTOR OUTPUT PARAMETERS: | VALUE | UNITS | TOLERANCE |
|--|--------------|-------------|-----------|
| Gearhead Ratio (exact) | 45.56 : 1 | | |
| Gearhead Shaft Output Speed (at full-load) | 110 | RPM | MAX |
| Gearmotor Rated Continuous Torque | 71 | In-Lbs | MAX |
| Gearmotor Rated Peak Torque | 212++ | In-Lbs | ---- |
| Gearhead Standard Backlash | 45 | Arc Minutes | MAX |
| Gearhead Efficiency | 75% | ---- | ---- |
| Output Shaft Radial Load Capacity | 72 | Lbs | MAX |
| Output Shaft Axial Load Capacity | 23 | Lbs | MAX |
| Gearmotor Total Weight | 5.7 | Lbs | MAX |

++ All Peak Torque values are dependent upon duty. Contact our sales office for details.

| DC MOTOR PERFORMANCE PARAMETERS: | VALUE | UNITS | TOLERANCE |
|----------------------------------|-------|-----------|-----------|
| Rated DC Voltage | 24 | DC VOLTS | ---- |
| Rated Continuous Current | 7.5 | AMPERES | ---- |
| No-Load Speed | 6486 | RPM | MAX |
| Rated Speed | 4993 | RPM | +/- 15% |
| Rated Continuous Power Out | 123 | WATTS | +/- 15% |
| Rated Continuous Torque | 33 | OZ-IN | ---- |
| Peak Torque (motor only) | 108 | OZ-IN | ---- |
| No-Load Current | 0.82 | AMPERES | MAX |
| Back EMF Constant (Ke) | 3.7 | V/KRPM | +/- 10% |
| Torque Constant (Kt) | 5.0 | OZ-IN/AMP | +/- 10% |
| DC Armature Resistance | 0.74 | OHMS | +/- 15% |
| Armature Inductance | 0.54 | mH | +/- 15% |
| Armature temperature | 155 | DEG. C | MAX |

NOTES:

- ENCODER & BRAKE OPTIONS AVAILABLE – [FOLLOW THIS LINK FOR DETAILS](#)
- NEMA MOUNTING FLANGE OPTION AVAILABLE – [FOLLOW THIS LINK FOR DETAILS](#)

MIDWEST MOTION PRODUCTS, INC

DESIGN, MANUFACTURING & DISTRIBUTION - MOTION CONTROL EQUIPMENT

www.midwestmotion.com

email: sales@midwestmotion.com